

Schrittmotor Serie Nema34 SM34H6.x00L00

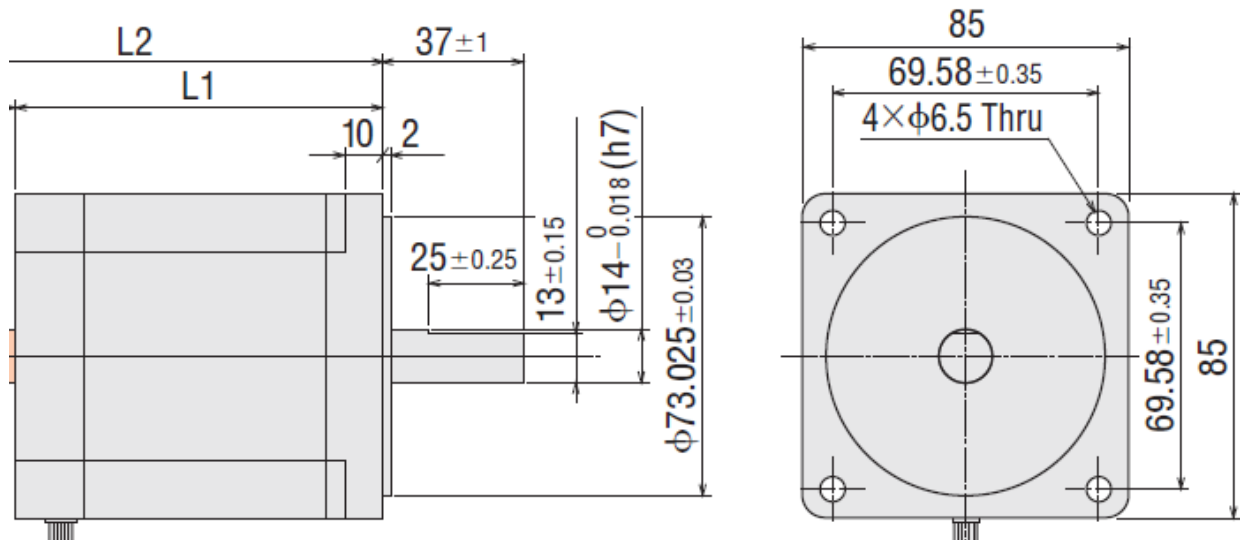
Schrittmotor mit Litze



Allgemeine Technische Daten

Baugröße		SM34H6.100L	SM34H6.200L	SM34H6.300L	
Haltemoment	[Nm]	3,1	6,2	9,3	
Phasenstrom	[A]	6,3	6,3	5,6	
Phasenwiderstand	[Ohm]	0,24	0,33	0,49	
Induktivität	[mH]	1,5	2,5	4,2	
Trägheitsmoment	[kgcm ²]	1,4	2,7	4	
Umgebungstemperatur	[°C]	-10 ... +50	-10 ... +50	-10...+50	
Schrittauflösung Vollschritt	[°]	1,8	1,8	1,8	
Gewicht	[kg]	1,7	2,8	3,8	

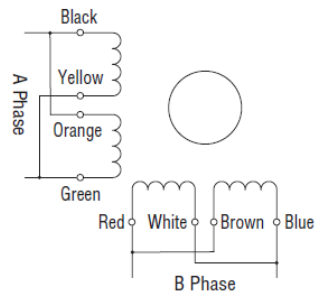
Maßblatt



Länge	L1
SM34H6.100IK	66 mm
SM34H6.200IK	96 mm
SM34H6.300IK	126 mm

Motoranschluss

8 Leads Bipolar (Parallel) Connection

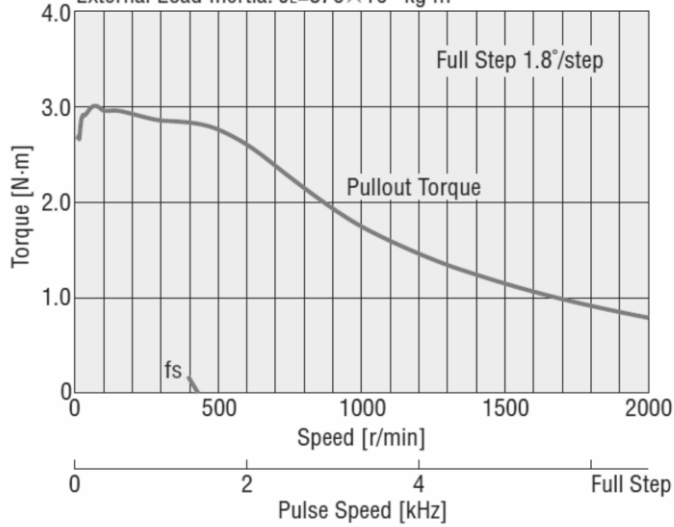


Drehmomentkennlinien

SM34H6.100L

Bipolar (Parallel)

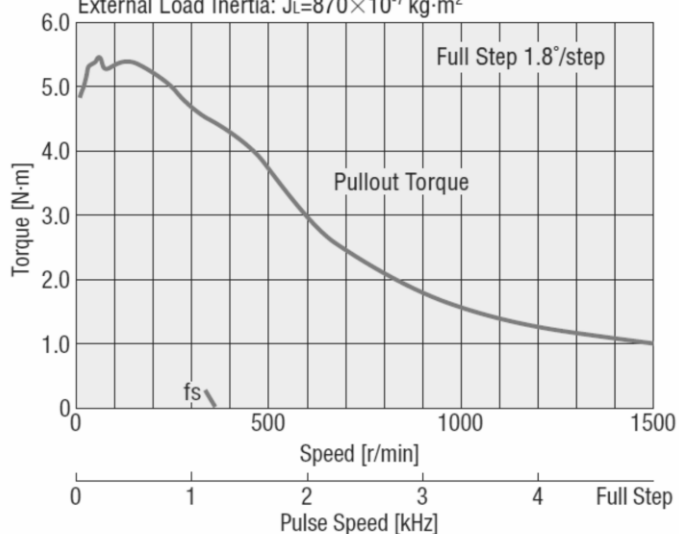
Constant Current Driver Power Supply Voltage: 60 VDC
 Current: 6.3 A/Phase (At 2-phase excitation)
 External Load Inertia: $J_L=870 \times 10^{-7} \text{ kg} \cdot \text{m}^2$



SM34H6.200L

Bipolar (Parallel)

Constant Current Driver Power Supply Voltage: 60 VDC
 Current: 6.3 A/Phase (At 2-phase excitation)
 External Load Inertia: $J_L=870 \times 10^{-7} \text{ kg}\cdot\text{m}^2$



SM34H6.300L

Bipolar (Parallel)

Bipolar Constant Current Driver Power Input: 60 VDC
 Current: 5.6 A/Phase (Bipolar Parallel)
 Load Inertia: $J_L=870 \times 10^{-7} \text{ kg}\cdot\text{m}^2$

